



# 法思特辊筒选型手册

Fast roller selection manual



**法思特——替代外挂电机的大负载输送电辊筒品牌**

FAST——The brand of heavy-load drum motor that replace the traditional external motor

D50、D60、D76系列负载涵盖：

D50、D60、D76 Serie load coverage:

**200KG、300KG、500KG、600KG、800KG、1000KG、1200KG、1500KG**

# 目录CONTENTS

---

## 01 企业介绍 Enterprise

关于法思特 About FAST	01-02
企业文化 Corporate culture	02
应用场景 Application scenario	05
产品型号及命名规则 Product model and naming rules	08

## 02 产品选型 Products

电动辊筒 Drum motor	10-20
无动力辊筒 Unpowered drum	21-24
非标定制电动辊筒 Non-standard custom drum motor	25
皮带线 Belt conveyor	26-27
驱动器 Driver	28-33
电动辊筒安装支架 Drum motor mounting bracket	34
锁胶套 Rubber lock sleeve	35



## 法思特——替代外挂电机的大负载输送电辊筒品牌

FAST——The brand of heavy-load drum motor that replace the traditional external motor

### 发展历程 Development course

- **2020年9月** 正式成立  
Formally established
- **2021年** 自主研发产品:电动辊筒、无动力辊筒、驱动器、锁胶套、安装支架。产品应用于食品加工、医药生产、电子装配、机场物流、邮政服务、配送等多个领域。  
Self-developed products: electric roller, non-power roller, drive, lock sleeve, mounting bracket. Products are used in food processing, pharmaceutical production, electronic assembly, airport logistics, distribution and other fields.
- **2022年** 电动辊筒销售额达1000万元  
Electric roller sales reached 10 million yuan.
- **2023年** 进入新能源领域赛道,为新能源传送助力。  
Enter the new energy field track, send help to new energy.
- **2023年9月** 获得IOS质量体系认证、环境体系认证、欧盟CE认证。  
Obtained IOS quality system certification, environmental system certification, EU CE certification.
- **2024年** 被认定为江苏省“科技型中小企业”;国际贸易部建立  
Recognized as a "Technology-based Small and Medium-sized Enterprise" of Jiangsu Province; establishment of the International Trade Department.
- **2025年** 全面优化完善核心产品线,完成输送模组全系列产品的迭代升级与品类拓展,持续夯实公司在智能输送领域的产品竞争力。  
Comprehensively optimized and improved the core product line, completed the iterative upgrade and category expansion of the full range of conveyor module series products, and continuously consolidated the company's product competitiveness in the intelligent conveying field.



## 关于法思特 About FAST

法思特驱动科技(无锡)有限公司成立于2020年,总部位于无锡市滨湖区,是一家专注于大负载电动辊筒及智能驱动系统研发制造的高新技术企业。公司核心产品有D50/D60/D76等系列电动辊筒,最大负载可达1500KG,可完全替代传统外挂电机方案,并节能50%以上,兼具易安装维护、低噪音、长寿命等显著优势。

依托自主研发的电动辊筒及驱动器核心技术,公司已形成辊筒输送机、皮带输送机、链式输送机、高速滚轮输送机,顶升移栽机和提升机等输送设备,广泛应用于新能源(原料库、化成物流、成品库)、食品加工、医药生产、电子装配、机场物流、邮政分拣、配送中心等关键工业领域。

公司拥有经验丰富的研发团队,持有自主知识产权专利,严格遵循ISO 9001质量管理体系与ISO 14001环境管理体系标准,产品通过欧盟CE认证、SGS、UL认证。未来,法思特将持续秉承"以客户为中心,为客户创造价值"的经营理念,致力于成为全球智能物流输送核心驱动领域的领先供应商。

Fast Drive Technology (Wuxi) Co., Ltd. was established in 2020 and is headquartered in Binhu District, Wuxi City. It is a high-tech enterprise specializing in the R&D and manufacturing of heavy-duty motor-driven rollers (MDR) and intelligent drive systems.

Fast's core products cover the D50/D60/D76 series of motorized rollers, with a maximum load capacity of 1,500 kg. They can completely replace traditional external motor solutions. Compared with traditional external motor-driven rollers, Fast MDRs deliver over 50% energy savings, along with significant advantages including easy installation and maintenance, low noise operation, and a longer service life.

Leveraging self-developed core technologies in MDRs and drive controllers, the company has established a complete product portfolio encompassing roller conveyors, belt conveyors, chain conveyors, high-speed wheel conveyors, jacking transplanters, and lifting machines. These solutions are widely applied in critical industrial sectors including new energy (raw material warehouses, formation logistics, finished product warehouses), food processing, pharmaceutical production, electronics assembly, airport logistics, postal sorting, and distribution centers.

FAST boasts an experienced R&D team and owns patents for independent intellectual property rights. The company strictly complies with the ISO 9001 Quality Management System and ISO 14001 Environmental Management System standards, and its products have obtained EU CE certification, SGS certification and UL certification. In the future, FAST will continue to uphold the business philosophy of "customer-centricity and value creation for customers", and strive to become a leading supplier in the core drive sector of global intelligent logistics conveying.

## 企业文化 Corporate culture

### 公司愿景

为中国工业传送装备国产化做出贡献,建立起中国人自己的世界品牌。

Contribute to the localization of China's industrial transmission equipment and establish a world brand of Chinese people's own.

### 品牌定位

专注于大负载的电动辊筒品牌。

Brand of electric rollers that focus on large loads.

### 公司使命

以客户为中心,为客户创造价值。

Customer-centric, create value for customers.

### 核心价值观

专注、极致、口碑、快

Focus, extreme, reputation, fast

### 执行力理念

以结果为导向,持续创新。

Focus, extreme, reputation, fast

### 营销理念

靠提升客户体验和口碑来赢得客户信赖。

Earn customer trust by improving customer experience and word of mouth.

## 企业荣誉 Corporate honor

公司拥有经验丰富的研发团队，持有自主知识产权专利，严格遵循ISO 9001质量管理体系与ISO 14001环境管理体系标准，产品通过欧盟CE认证、SGS、UL认证。未来，法思特将持续秉承“以客户为中心，为客户创造价值”的经营理念，致力于成为全球智能物流输送核心驱动领域的领先供应商。

FAST boasts an experienced R&D team and owns patents for independent intellectual property rights. The company strictly complies with the ISO 9001 Quality Management System and ISO 14001 Environmental Management System standards, and its products have obtained EU CE certification, SGS certification and UL certification. In the future, FAST will continue to uphold the business philosophy of "customer-centricity and value creation for customers", and strive to become a leading supplier in the core drive sector of global intelligent logistics conveying.



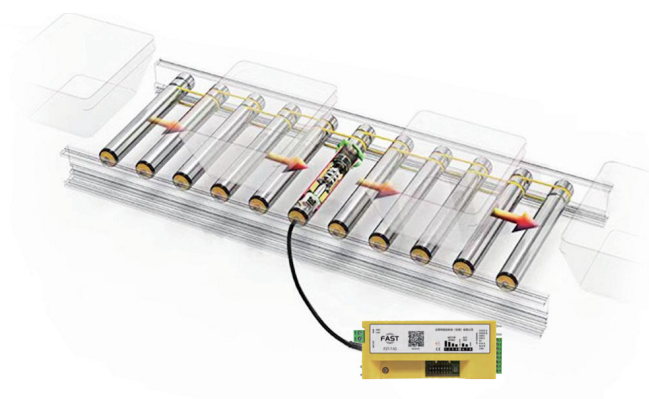
## 合作伙伴 Cooperative customer



## 电动辊筒 Drum motor

法思特电动辊筒内置微型电机，适用于分段式输送机、辊筒转弯输送机等多种输送设备。配合法思特驱动器使用，可以使输送机的能耗降低50%以上，相较于传统电机驱动的输送机，这种优化方案更节能高效。法思特电动辊筒具有体积小、重量轻、易安装、运行稳定等优点，可以满足各种物流传输应用的需求。

Fast drum motor has built-in micro motor, which is suitable for a variety of conveying equipment such as sectionalized conveyor and roller turning conveyor. When used with Fast drive, the energy consumption of the conveyor can be reduced by more than 50%, which is more energy efficient than the traditional motor driven conveyor. Fast electric roller has the advantages of small size, light weight, easy installation and stable operation, which can meet the needs of various logistics transmission applications.



结构紧凑  
Compact structure

输送节能  
Transmission energy saving

安装便捷  
Easy to install

传动高效  
Transmission efficiency

## 应用场景 Application scenario



新能源  
New energy



机场物流  
Airport logistics



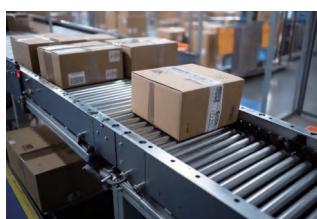
食品加工  
Food production



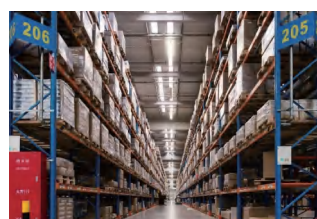
医药生产  
Pharmaceutical production



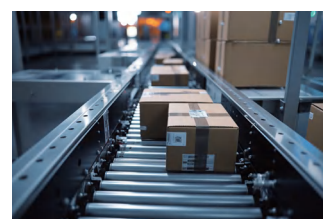
电子装配  
Electronic assembly



邮政服务  
Postal service

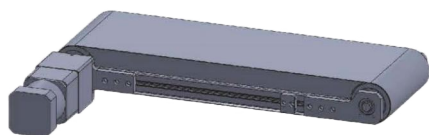


仓储物流  
Logistics sorting

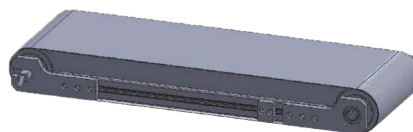


电子商务  
E-commerce

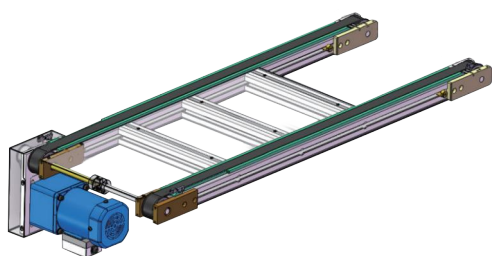
## 应用场景举例 Application scenario Example



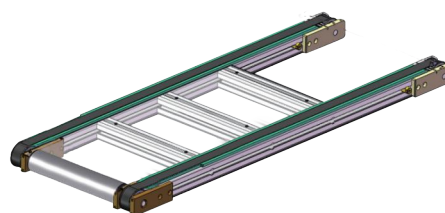
电机外置平皮带线结构  
Motor external flat belt conveyor structure



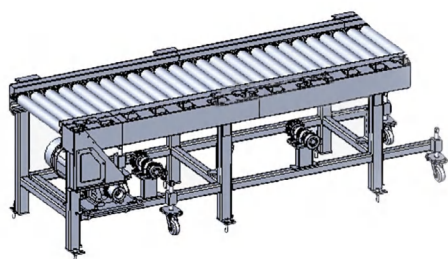
电滚筒平皮带线结构  
drum motor flat belt conveyor structure



同步带输送线结构  
Synchronous belt conveyor line structure



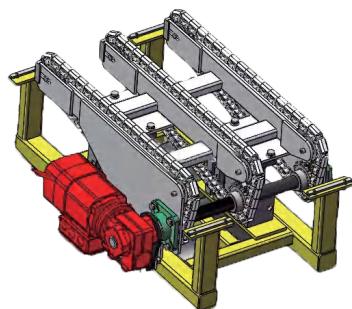
同步带电滚筒输送线结构  
Synchronous live roller conveyor line structure



电机外挂滚筒输送线结构  
Motor external roller conveyor line structure

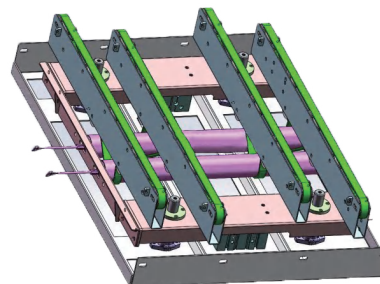


电动滚筒输送线结构  
Drum motor conveyor line structure



电机外挂顶升移载机结构  
Motor external load lifting machine structure

优化后  
Updated



电动滚筒顶升移载机结构  
Drum motor lifting machine structure

## 法思特电动滚筒的性能优势 Performance advantages of Drum motor

一、高负载,稳定输送负载可达 1500KG,能带更重的货,带更多的无动力滚筒,节省电动滚筒的数量降低成本。

Heavy-Load Capacity and stably conveying loads of up to 1,500 kg. This enables the handling of heavier goods and supports a greater number of non-powered rollers, thereby reducing the required quantity of motorized rollers and lowering overall costs.

二、低耗能,输送节能。采用 24V 无刷直流电机驱动,对比传统交流电机 550W 的额定功率,节约功耗最高可达 90%。

Low energy consumption and energy-efficient conveying. Driven by a 24V brushless DC motor, it achieves power savings of up to 90% compared to traditional AC motors with a rated power of 550W.

三、安装便捷,多种传动同匹配相应安装支架,简单快捷。

Easy installation, various transmissions can be matched with corresponding installation brackets, simple and fast.

四、传动高效,运输效率高,提高生产效率,降低人工成本。

Highly efficient transmission and transport capabilities enhance production efficiency while reducing labor costs.

五、使用寿命长,通过优化设计和匹配工况的合适选材,使用寿命长,减少停机时间。

With long Service Life, through optimized design and the selection of materials tailored to specific operating conditions, the product achieves a long service life, thereby reducing downtime.

六、噪音低,与传统的机械式输送设备相比,电动滚筒噪音小,符合环保要求。

Low noise. Compared with traditional mechanical conveying equipment, the electric roller has low noise and meets environmental protection requirements.

### 法思特电动滚筒选型说明 Fast drum motor selection instructions

规格 Specifications	负载 Load size	0-100kg	100-200kg	200-400kg	400-700kg	700-1500kg
(建议最大负载情况下) 线速度 Linear velocity		≤ 30m/min	≤ 30m/min	≤ 20m/min	≤ 15m/min	≤ 12m/min
辊筒直径 Roll diameter		D50	D50	D50/D60	D60	D76
辊筒壁厚 Roll wall thickness		1.5mm	1.5mm	D50-1.5mm D60-2.0mm	2.0mm	3.0mm
电机功率 Motor power		40W	60W	100W/160W	160W	200W/400W
电压大小 Voltage magnitude		DC24V	DC24V	DC24V	DC24V	DC48V
可带从动辊筒数量 Driven Rollers Number		20m/min (1拖15)	20m/min (1拖20)	80W: 20m/min (1拖15) 160W: 20m/min (1拖17)	15m/min (1拖15)	12m/min (1拖12)

\*具体一根电动滚筒可带从动辊筒数量可咨询我们。

\*Please consult us for the specific number of driven rollers that drum motor can carry.

\*电压可定制单相 AC220V, AC380V。

\*The voltage can be customized for single-phase AC220V and AC380V.

## 辊筒产品型号及命名规则 Product model and naming rules

### FST - D50 - 500 - 20 - U - SD - N - 24 - C1 - X2 - S - 60

① ② ③ ④ ⑤ ⑥ ⑦ ⑧ ⑨ ⑩ ⑪ ⑫ ⑬

① 公司名称 Name	
FST	法思特 FSAT

② 辊筒类型 Type	
D	动力辊筒 Power roller
N	无动力辊筒 Non-power roller

③ 辊筒直径 Diameter	
50	Φ50mm
60	Φ60mm
76	Φ76mm

④ 辊筒长度 Length	
300	L=300 mm
400	L=400mm
500	L=500mm
...	...
1500	L=1500mm

注:辊筒长度数值仅为参考,具体数值可以为非整百数值。超过1500mm时,请联系我们。

Note: The roller length is for reference only, and the specific can be non-integral value. For more than 1500mm, please contact us.

⑤ 线速度 Linear velocity	
5	5m/min
10	10m/min
20	20m/min
30	30m/min
45	45m/min
110	110m/min
160	160m/min

注:速度数值仅为直径50mm的辊筒参数,其他规格可以在对应辊筒直径的速度性能参数表里选取。

Note: The speed value is only the roller parameter with a diameter of 50mm, and other specifications can be selected in the speed performance parameter table corresponding to the diameter of the roller.

⑥ 辊筒材料 Materials	
T	碳钢镀锌 Galvanized carbon steel
S	304不锈钢 stainless
U	201 不锈钢 stainless

⑦ 传动类型 Transmission type	
P	普通直辊 Straight roller
SD	塑钢多楔带轮 Poly-V (Plastic-steel)
TD	钢制发黑多楔带轮 Poly-V (Steel, Black Oxide)
LD	铝制阳极氧化多楔带轮 Poly-V (Aluminum, Anodized)
GD	钢制镀铬多楔带轮 Poly-V (Steel, Chrome Plated)
L1	08B-11T双链轮 Duplex Sprocket
L2	08B-14TX双链轮 Duplex Sprocket
L3	10A-13T双链轮 Duplex Sprocket
L4	10A-11T双链轮 Duplex Sprocket
L5	10A-15T双链轮 Duplex Sprocket
A	铝制同步带轮 Aluminum Timing Pulley
O	铝制O型带轮 Aluminum O-Ring Pulley
V	V槽轮 V-Groove Pulley
SDD	V槽轮双头-塑钢多楔带轮 Double-head Plastic Steel Poly-V Pulley
TDD	双头-钢制发黑多楔带轮 Double-head Steel Blackened Poly-V Pulley
LDD	双头-铝制阳极氧化多楔带轮 Double-head Aluminum Anodized Poly-V Pulley
GDD	双头-钢制镀铬多楔带轮 Double-head Steel Chrome-Plated Poly-V Pulley
LL1	双头-08B-11T双链轮 Double-head 08B-11T Duplex Sprocket
LL2	双头-08B-14T双链轮 Double-head 08B-14T Duplex Sprocket
LL3	双头-10A-13T双链轮 Double-head 10A-13T Duplex Sprocket
LL4	双头-10A-11T双链轮 Double-head 10A-11T Duplex Sprocket
LL5	双头-10A-15T双链轮 Double-head 10A-15T Duplex Sprocket
AA	双头-铝制同步带轮 Double-head Aluminum Timing Pulley
OO	双头-铝制O型带轮 Double-head Aluminum O-Ring Pulley
VV	双头-V槽轮 Double-head V-Groove Pulley

注: D多楔带轮(标准9齿),如果需要14齿及其他非标规格;

L双链轮(D50系列标准08B11T,D60系列标准08B14T,D76系列标准10A13T),如需其他非标规格,请联系我们。

Note: D multi-wedge belt pulley standard 9 teeth, if you need 14 teeth and other non-standard specifications,

L Double sprocket (D50 series standard are 08B11T, D60 series standard are 08B14T, D76 series standard are 10A13T), if you need other non-standard specifications, please contact us.

⑧ 辊筒外观处理 Appearance treatment	
N	无处理 No treatment
G2	滚花处理 Knurled finish
B3	聚氨酯包胶 - 3mm PU coated - 3mm
B4	聚氨酯包胶 - 4mm PU coated - 4mm
B5	聚氨酯包胶 - 5mm PU coated - 5mm
B6	聚氨酯包胶 - 6mm PU coated - 6mm
B7	聚氨酯包胶 - 7mm PU coated - 7mm
B8	聚氨酯包胶 - 8mm PU coated - 8mm
B9	聚氨酯包胶 - 9mm PU coated - 9mm
B10	聚氨酯包胶 - 10mm PU coated - 10mm
T2	套胶厚 2mm Coating thickness 2mm
S	锁胶套 Rubber locking sleeve
Z	锥套 Taper bush
G	鼓型处理 Drum-shaped finish
T	凸轮 Cam
D	挡边 Flange

⑨ 电机电压 Voltage	
24	DC24V
48	DC48V
220	AC220V
380	AC380V

⑩ 出线端出轴方式 Shaft output at wire end	
C1	六角对边 11mm Hexagon opposite side 11mm
C2	铣扁 Flat milling
C3	M12 六角带螺纹 M12 hexagon with thread
C4	M20 六角带螺纹 M20 hexagon with thread

⑪ 非出线端出轴方式 Shaft output at non-wire end	
X1	六角对边 11mm (固定) Hex 11mm (fixed)
X2	六角对边 11mm (弹性) Hex 11mm (Elastic)
X3	铣扁 Milling falt
X4	M8 内螺纹孔 M8 nternal thread
X5	M10 内螺纹孔 M10nternal thread
X6	M12 内螺纹孔 M12nternal thread

⑫ 驱动器 Driver	
T	FST-T-IO
S	FST-SQ-IO
B	FST-BH-150

★此款型号通过 CE和UL认证

⑬ 电机功率 Power of motor	
40	40W
60	60W
100	100W
120	120W
200	200W
400	400W

## 辊筒类型 Roll type

直辊  
Straight roll



无驱动头：  
一般用于重力式滚道输送  
Generally used for gravity raceway conveying

O型带轮  
O pulley



O带头：  
使用圆头驱动，适用于轻工行业  
Use round head drive, suitable for light industry

多楔带轮  
Multi-wedge pulley



多楔带头：  
适用于90%输送机运用  
Suitable for 90% conveyor applications

双链轮  
Double sprocket



链轮头：  
强度高，适用于重型物品运输  
High strength, suitable for heavy goods transport

同步带轮  
Synchronous pulley



同步带头：  
定位精准，满足移载段的应用需求  
Accurate positioning to meet the application requirements of load shifting section

## FST-D50系列

### FST-D50 series

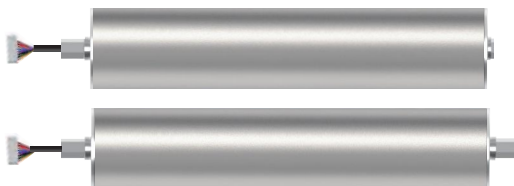


规格参数 Specification parameter											
辊筒直径Diameter	50mm										
辊筒壁厚Wall thickness	1.5mm										
额定电压Rated voltage	DC24V										
额定转速Rated speed	3600r/min										
静态负载能力 Static load capacity											
直径Φ50mm,壁厚1.5mm											
长度(mm)	300	400	500	600	700	800	900	1000	1100	1200	1300
承重(kg)	120	110	100	95	90	85	80	75	70	70	65
速度性能参数表 Speed performance parameter table											
最高线速度(m/min)	5	10	20	30	45	110	150				
额定扭矩(Nm)	20	10.2	5.4	3.8	2.6	1.04	0.74				
牵引力(N)	800	408	216	152	104	42	30				

- ▶ 辊筒长度:300-1500mm,超过1500mm时,请联系我们。  
Roller length: 300-1500mm, more than 1500mm, please contact us.
- ▶ 电缆标准长度:500mm,如有需要,可以提供延长电缆。  
Standard cable length: 500mm, extension cable can be provided if necessary.
- ▶ 电机电压:如需其他36V、48V、220V电机电压,请联系我们。  
Motor voltage: If you need other 36V, 48V, 220V motor voltage, please contact us.

辊筒类型及尺寸 Roller type and size

D50 直辊  
D50 straight roll



常规出轴, 双外六角, 输出轴端带内螺纹  
Standard output shaft, double external hexagonal, with internal thread at the output shaft end.

常规出轴, 双长外六角  
Standard output shaft, double long external hexagon

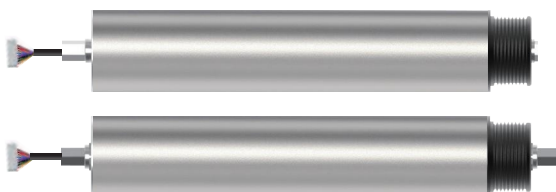
D50 O型带轮  
D50 O pulley



常规出轴, 双外六角, 输出轴端带内螺纹  
Standard output shaft, double external hexagonal, with internal thread at the output shaft end.

常规出轴, 双长外六角  
Standard output shaft, double long external hexagon

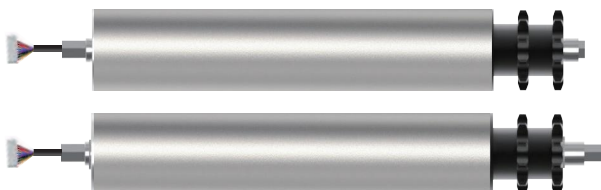
D50 多楔带轮  
D50 multi-wedge pulley



常规出轴, 双外六角, 输出轴端带内螺纹  
Standard output shaft, double external hexagonal, with internal thread at the output shaft end.

常规出轴, 双长外六角  
Standard output shaft, double long external hexagon

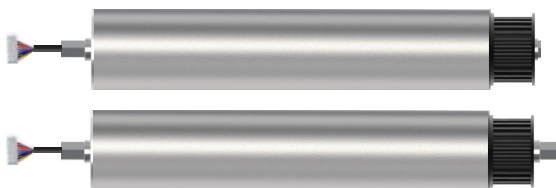
D50 双链轮  
D50 double sprocket



常规出轴, 双外六角, 输出轴端带内螺纹  
Standard output shaft, double external hexagonal, with internal thread at the output shaft end.

常规出轴, 双长外六角  
Standard output shaft, double long external hexagon

D50 同步带轮  
D50 synchronous pulley

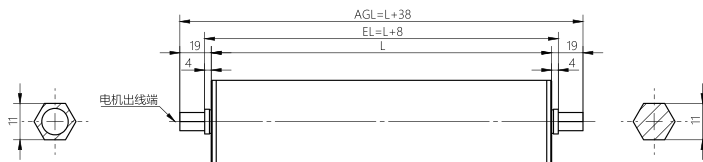


常规出轴, 双外六角, 输出轴端带内螺纹  
Standard output shaft, double external hexagonal, with internal thread at the output shaft end.

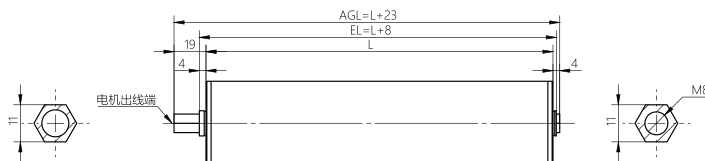
常规出轴, 双长外六角  
Standard output shaft, double long external hexagon

## D50直辊 D50 straight roll

- ▶ 常规出轴, 双长外六角  
Conventional exit shaft, double long outer hexagonal

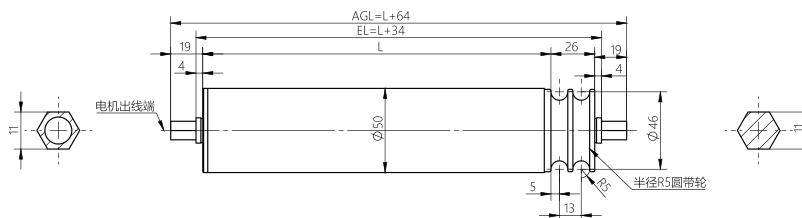


- ▶ 常规出轴, 双外六角, 输出轴端带内螺纹  
Conventional output shaft, double outer hexagon, output shaft end with internal thread

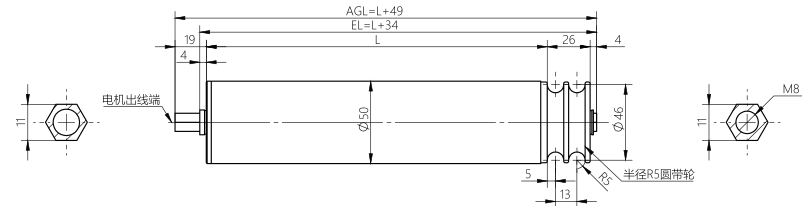


## D50 O型带轮 D50 O pulley

- ▶ 常规出轴, 双长外六角  
Conventional exit shaft, double long outer hexagonal

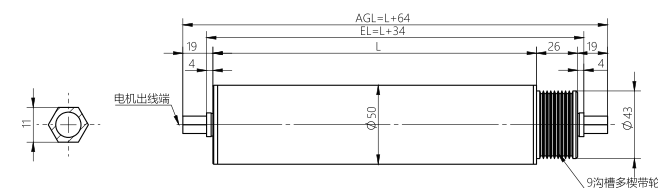


- ▶ 常规出轴, 双外六角, 输出轴端带内螺纹  
Conventional output shaft, double outer hexagon, output shaft end with internal thread

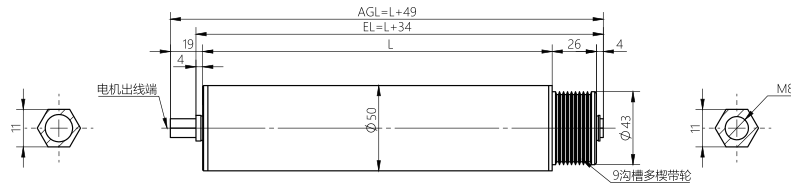


## D50 多楔带轮 D50 multi-wedge pulley

- ▶ 常规出轴, 双长外六角  
Conventional exit shaft, double long outer hexagonal

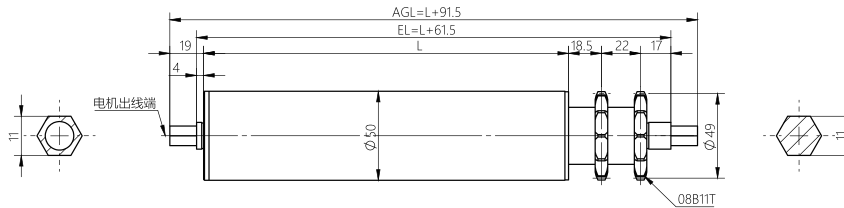


- ▶ 常规出轴, 双外六角, 输出轴端带内螺纹  
Conventional output shaft, double outer hexagon, output shaft end with internal thread

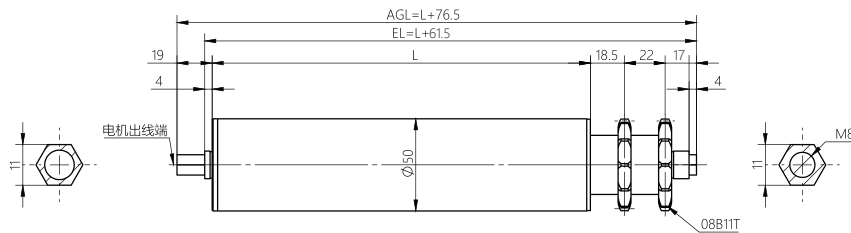


## D50 双链轮 D50 double sprocket

- ▶ 常规出轴, 双长外六角  
Conventional exit shaft, double long outer hexagonal

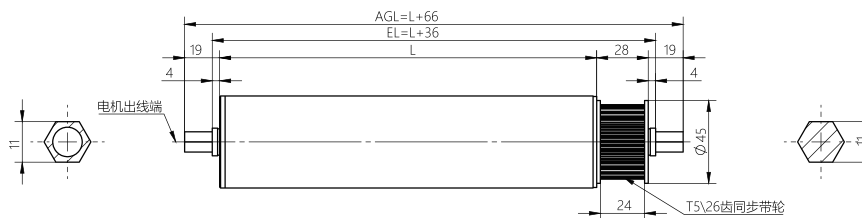


- ▶ 常规出轴, 双外六角, 输出轴端带内螺纹  
Conventional output shaft, double outer hexagon, output shaft end with internal thread

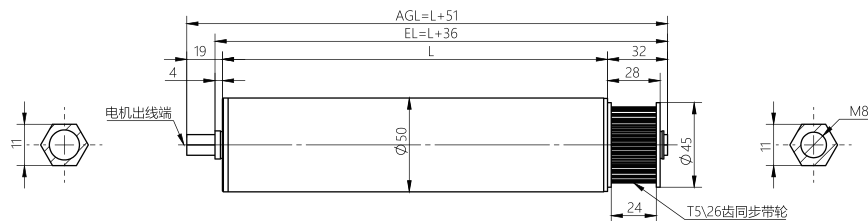


## D50 同步带轮 D50 synchronous pulley

- ▶ 常规出轴, 双长外六角  
Conventional exit shaft, double long outer hexagonal

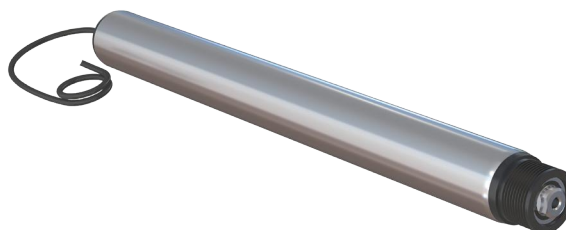


- ▶ 常规出轴, 双外六角, 输出轴端带内螺纹  
Conventional output shaft, double outer hexagon, output shaft end with internal thread



## FST-D60系列

### FST-D60 series

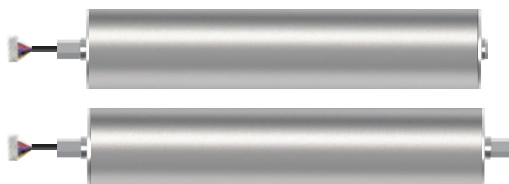


规格参数 Specification parameter											
辊筒直径Diameter	60mm										
辊筒壁厚Wall thickness	1.5mm										
额定电压Rated voltage	DC24V										
额定转速Rated speed	3500r/min										
静态负载能力 Static load capacity											
直径Φ60mm,壁厚1.5mm											
长度 (mm)	300	400	500	600	700	800	900	1000	1100	1200	1300
承重 (kg)	180	180	150	150	120	120	100	100	85	70	60
直径Φ60mm,壁厚2.0mm											
长度 (mm)	800	1000	1200	1400	1600	1800	2000				
承重 (kg)	200	200	165	130	95	70	55				
速度性能参数表 Speed performance parameter table											
最高线速度 (m/min)	5	10	25	35	50	130	180				
额定扭矩 (Nm)	30.4	15.5	6.6	4.6	3.2	1.4	1				
牵引力 (N)	1013	518	219	154	105	47	33				

- ▶ 辊筒长度: 300-1500mm, 超过1500mm时, 请联系我们。  
Roller length: 300-1500mm, more than 1500mm, please contact us.
- ▶ 电缆标准长度: 500mm, 如有需要, 可以提供延长电缆。  
Standard cable length: 500mm, extension cable can be provided if necessary.
- ▶ 电机电压: 如需其他36V、48V、220V电机电压, 请联系我们。  
Motor voltage: If you need other 36V, 48V, 220V motor voltage, please contact us.

## 辊筒类型及尺寸 Roller type and size

D60 直辊  
D60 straight roll



常规出轴, 双外六角, 输出轴端带内螺纹  
Standard output shaft, double external hexagonal, with internal thread at the output shaft end.

常规出轴, 双长外六角  
Standard output shaft, double long external hexagon

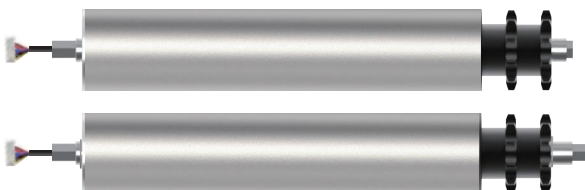
D60 多楔带轮  
D60 multi-wedge pulley



常规出轴, 双外六角, 输出轴端带内螺纹  
Standard output shaft, double external hexagonal, with internal thread at the output shaft end.

常规出轴, 双长外六角  
Standard output shaft, double long external hexagon

D60 双链轮  
D60 double sprocket



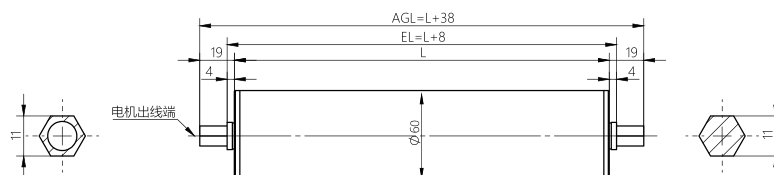
常规出轴, 双外六角, 输出轴端带内螺纹  
Standard output shaft, double external hexagonal, with internal thread at the output shaft end.

常规出轴, 双长外六角  
Standard output shaft, double long external hexagon

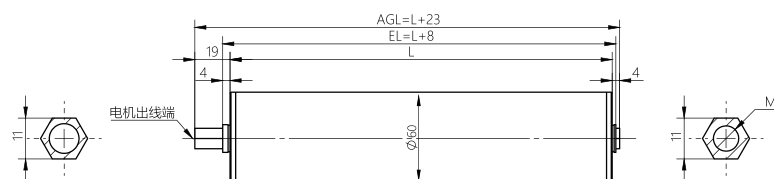
► 如果需要其他辊筒出轴方式, 请联系我们, 我们可以为您定制。  
If you need other roller out of the shaft, please contact us, we can customize for you.

## D60直辊 D60 straight roll

- ▶ 常规出轴, 双长外六角  
Conventional exit shaft, double long outer hexagonal

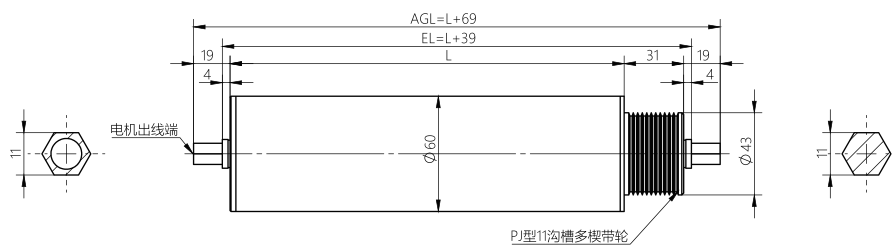


- ▶ 常规出轴, 双外六角, 输出轴端带内螺纹  
Conventional output shaft, double outer hexagon, output shaft end with internal thread

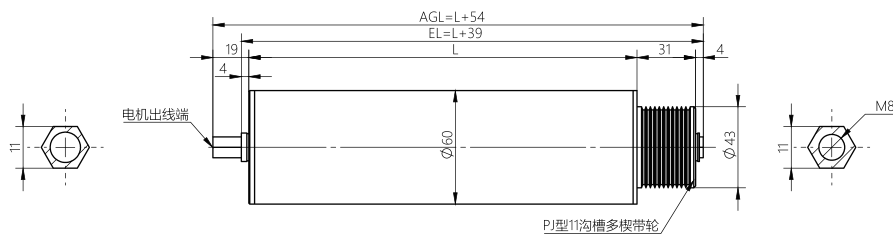


## D60 多楔带轮 D60 multi-wedge pulley

- ▶ 常规出轴, 双长外六角  
Conventional exit shaft, double long outer hexagonal

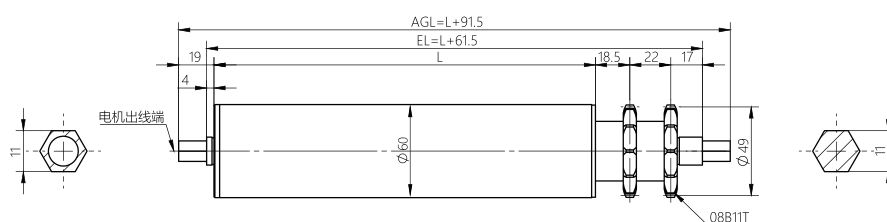


- ▶ 常规出轴, 双外六角, 输出轴端带内螺纹  
Conventional output shaft, double outer hexagon, output shaft end with internal thread

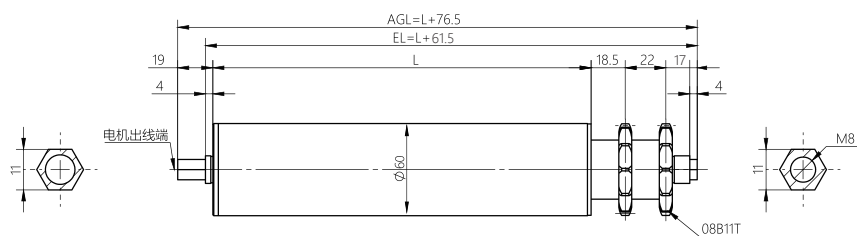


## D60 双链轮 D60 double sprocket

- ▶ 常规出轴, 双长外六角  
Conventional exit shaft, double long outer hexagonal

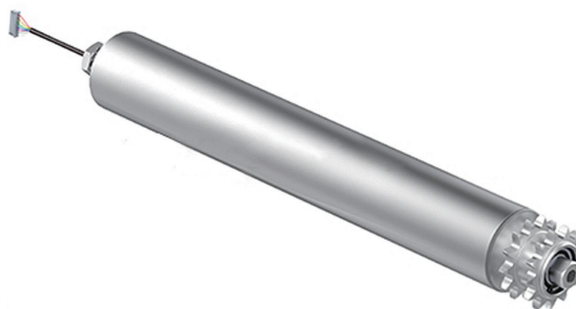


- ▶ 常规出轴, 双外六角, 输出轴端带内螺纹  
Conventional output shaft, double outer hexagon, output shaft end with internal thread



## FST-D76系列

### FST-D76 series

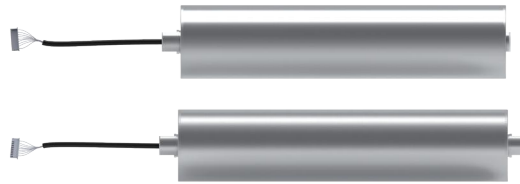


规格参数 Specification parameter											
辊筒直径Diameter	76mm										
辊筒壁厚Wall thickness	2.5mm/3mm										
额定电压Rated voltage	DC48V/AC220V/AC380V										
额定转速Rated speed	3000r/min										
静态负载能力 Static load capacity											
直径Φ76mm,壁厚2.5mm											
长度 (mm)	300	400	500	600	700	800	900	1000	1100	1200	1300
承重 (kg)	300	280	270	275	270	260	255	250	240	230	225
直径Φ76mm,壁厚3.0mm											
长度 (mm)	1000	1200	1400	1600	1800	2000	2200				
承重 (kg)	420	420	360	280	220	175	150				
速度性能参数表 Speed performance parameter table											
最高线速度 (m/min)	7	10	14	20	27	37	52	106			
额定扭矩 (Nm)	41.5	29.7	21.2	16.2	12.5	8.9	6.4	3.5			
牵引力 (N)	1093	781	558	427	328	234	167	92			

- ▶ 辊筒长度: 370-1500mm, 超过1500mm时, 请联系我们。  
Roller length: 370-1500mm, more than 1500mm, please contact us.
- ▶ 电缆标准长度: 500mm, 如有需要, 可以提供延长电缆。  
Standard cable length: 500mm, extension cable can be provided if necessary.

辊筒类型及尺寸 Roller type and size

D76 直辊  
D76 straight roll



常规出轴, 双铣扁, 轴端带内螺纹孔  
Conventional out shaft, double milling flat. shaft end with internal threaded hole.

常规出轴, 双铣扁  
Conventional out shaft, double milling flat.

D76 双链轮  
D76 double sprocket

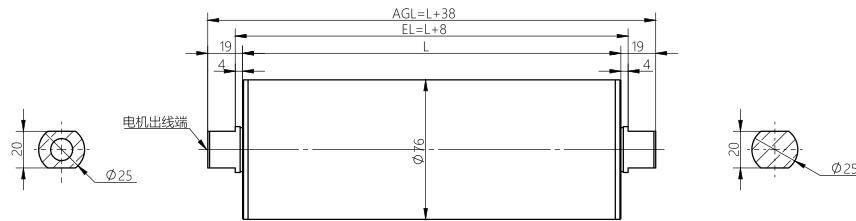


常规出轴, 双铣扁, 轴端带内螺纹孔  
Conventional out shaft, double milling flat. shaft end with internal threaded hole.

常规出轴, 双铣扁  
Conventional out shaft, double milling flat.

D76 直辊 D76 straight roll

- ▶ 常规出轴, 双铣扁  
Conventional out shaft, double milling flat

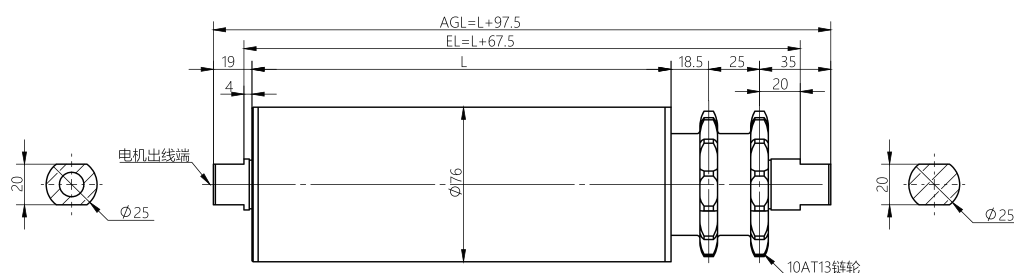


- ▶ 常规出轴, 双铣扁, 轴端带内螺纹孔  
Conventional shaft, double milled flat, shaft end with internal threaded hole

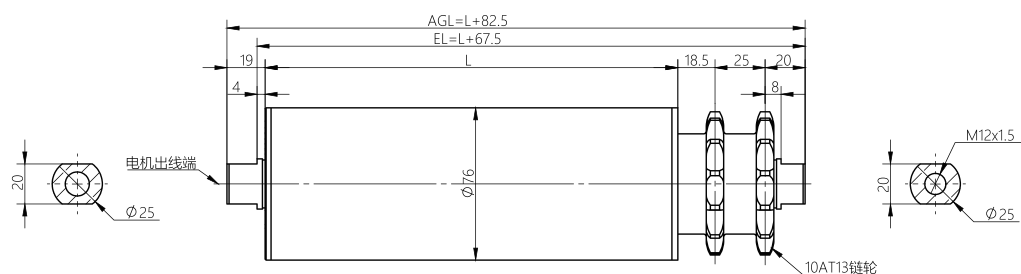


## D76 双链轮 Double sprocket wheel

- ▶ 常规出轴, 双铣扁  
Conventional out shaft, double milling flat



- ▶ 常规出轴, 双铣扁, 轴端带内螺纹孔  
Conventional shaft, double milled flat, shaft end with internal threaded hole



## 无动力辊筒 Unpowered Roller

### 无动力辊筒 Unpowered Roller



法思特无动力辊筒可以承载轻型、中型、重型物料的运输, 依靠重力或牵引输送。适配多种驱动头, 应用场景广泛。

Fast unpowered rollers can carry light, medium and heavy material transport, relying on gravity or traction. Suitable for a variety of drivers, a wide range of application scenarios.

**轻型**                      转动灵活, 稳定性好, 启动轻便  
light-duty                      Flexible rotation, good stability, easy to start

- 适用于轻窄物料运输, 如纸箱、料箱、塑料周转箱等, 快递、邮政等物流行业使用较多。
- Suitable for light and narrow material transportation, such as cartons, material boxes, plastic turnover boxes, etc., which are used more in logistics industries such as express and postal services.
- 对环境要求不高, 高低温均可良好运行。
- The use of environment requirements are not high, high and low temperature can work well.
- 使用精密滚珠轴承, 降低噪声。
- Use precision ball bearings to reduce noise.
- 适配多种驱动头, 应用场景广泛。
- Suitable for a variety of driver heads, wide range of application scenarios.

**中型**                      可靠坚固, 运行稳定, 适应性强  
middle-sized                      Reliable fastening, stable operation, strong adaptability

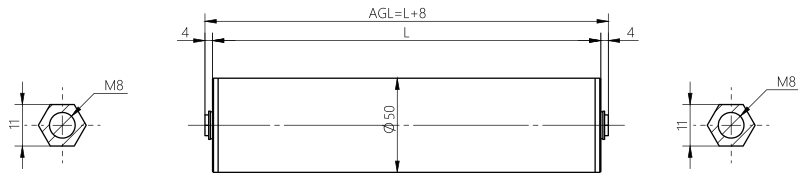
- 单根滚筒最大可承载250KG, 使输送线的载荷能力更强。
- Single drum can carry up to 250KG, so that the load capacity of the conveyor line is stronger.
- 智能工厂智能制造使用较多。
- Smart factory Smart manufacturing is used more.

**重载**                      结构稳固, 功能可靠, 坚固耐用, 承载高  
Heavy load                      Stable structure, reliable function, durable, high bearing capacity

- 单根滚筒最重可承载420KG, 适用于托盘、钢制料箱的运输。
- Single drum can carry up to 420KG, suitable for the transport of pallets and steel bins.
- 适配钢制单双链轮头和不锈钢链轮头作为驱动方式, 用于较高负载的运用。
- ADAPTS steel single and double sprocket heads and stainless steel sprocket heads as driving modes for higher load applications.

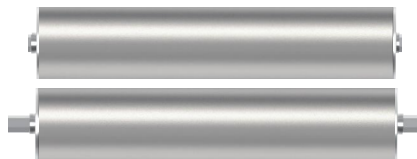
## FST-N50系列

FST-N50 series



### 辊筒类型及尺寸 Roller type and size

N50 直辊  
N50 straight roll



N50 O型带轮  
N50 O pulley



N50 多楔带轮  
N50 multi-wedge pulley



N50 双链轮  
N50 double sprocket

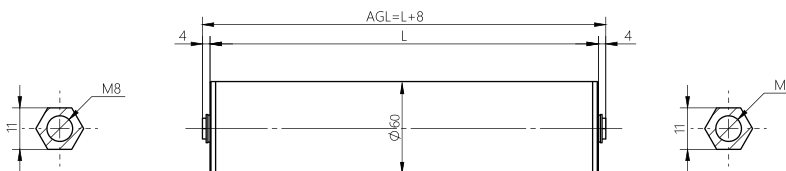


N50 同步带轮  
N50 synchronous pulley



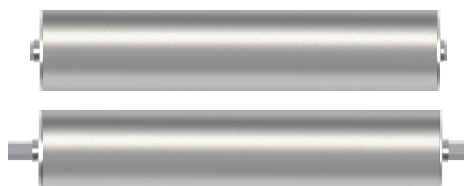
## FST-N60系列

### FST-N60 series



## 辊筒类型及尺寸 Roller type and size

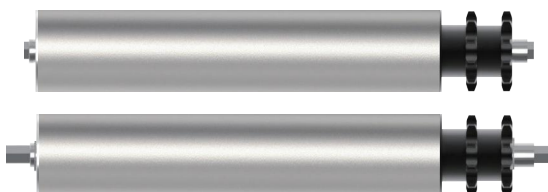
N60 直辊  
N60 straight roll



N60 多楔带轮  
N60 multi-wedge pulley

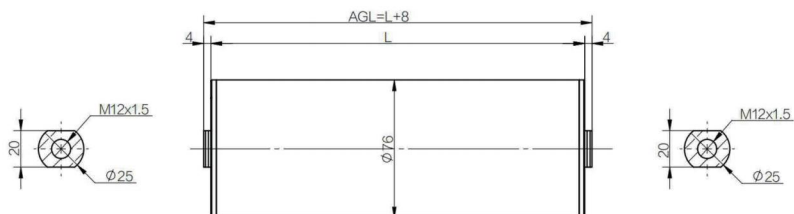


N60 双链轮  
N60 double sprocket



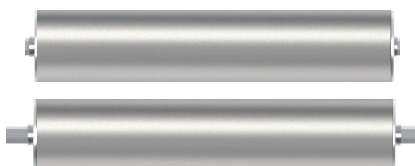
► 如果需要其他辊筒出轴方式, 请联系我们, 我们可以为您定制。  
If you need other roller out of the shaft, please contact us, we can customize for you.

## FST-N76系列 FST-N76 series

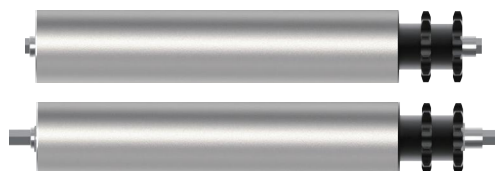


### 辊筒类型及尺寸 Roller type and size

N76 直辊  
N76 straight roll



N76 双链轮  
N76 double sprocket



► 如果需要其他辊筒出轴方式, 请联系我们, 我们可以为您定制。  
If you need other roller out of the shaft, please contact us, we can customize for you.

## 双头电动辊筒

Double head drum motor



## 辊筒类型及尺寸 Roller type and size

双头多楔带轮

Double-ended multi-wedge pulley



双头双链轮

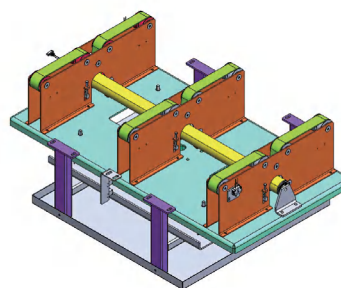
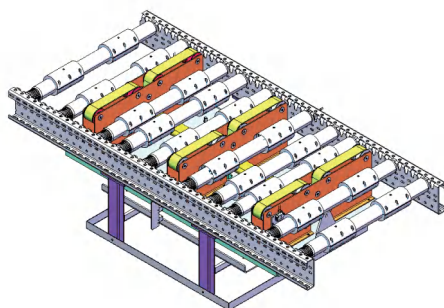
Double ended double sprocket



► 如果需要其他辊筒出轴方式, 请联系我们, 我们可以为您定制。  
If you need other roller out of the shaft, please contact us, we can customize for you.

## 使用示例 Use example

应用于顶升移栽机  
Used in jacking transplanter



## FST-B-50系列

FST-B-50 series

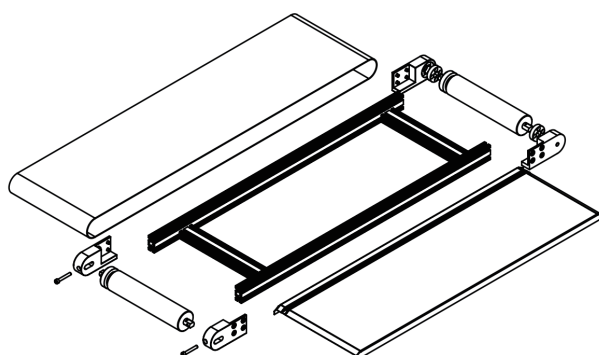


产品型号及命名规则 Product model and naming rules

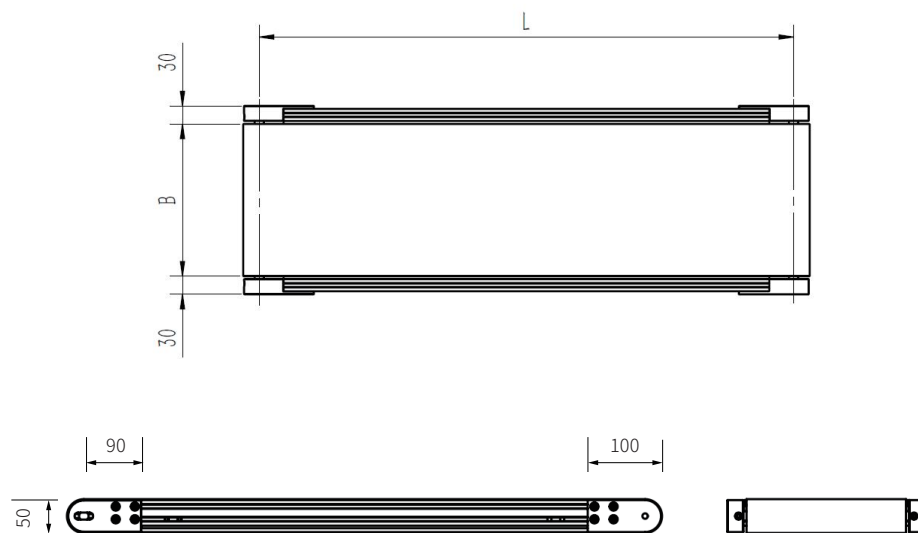
### FST-B-50-250-1000-24-50-60-W

① ② ③ ④ ⑤ ⑥ ⑦ ⑧ ⑨

编号Id	属性 Stats	内容 Content
①	公司名称 Company name	法思特
②	产品类型 Product type	带式输送机
③	辊筒直径 Roll diameter	Φ50mm
④	皮带宽度 Belt width	250-800mm
⑤	带轮中心距 Center distance of pulley	300-3000mm
⑥	电压 voltage	DC24/48V
⑦	功率 power	50/80W
⑧	皮带线速度 Belt linear speed	10-90m/min
⑨	皮带类型 Belt type	PVC白色

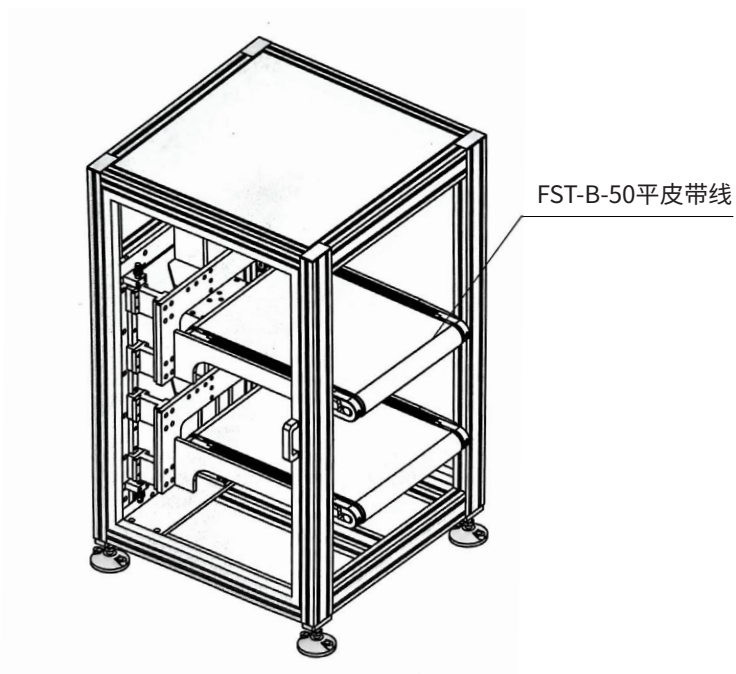


尺寸 Size



使用示例 Use example

应用于物料上下回流提升机  
Applied to material up and down reflux elevator



## FST-T-IO驱动器

### FST-T-IO Driver



★此型号通过CE和UL认证

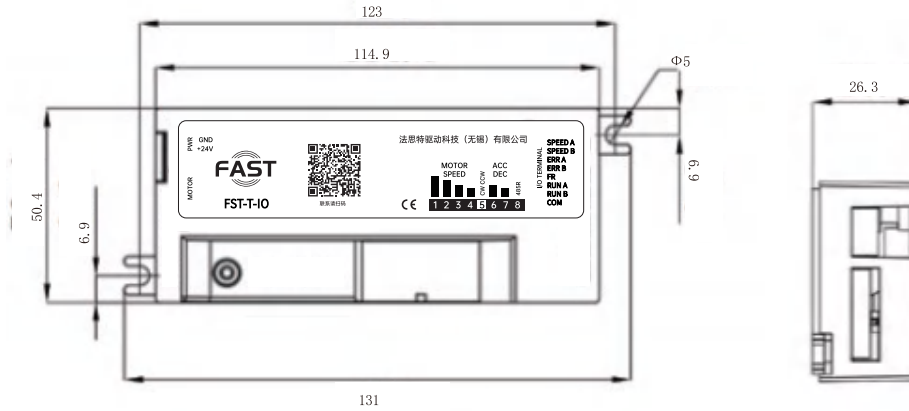
#### 特性 Pecularity

- |   |   |
|---|---|
| <ul style="list-style-type: none"> <li>-双向光耦隔离, 自动识别 PNP/NPN 信号</li> <li>-16 档速度拨码设定, 3 档 I/O 信号多段速切换</li> <li>-4 档加 / 减速时间可自由配置</li> <li>-8 重故障全保护</li> <li>-驱动卡与电动辊筒过热、过流双重保护</li> <li>-红绿双色 LED 状态灯, 清晰显示待机 / 运行 / 故障</li> <li>-故障信号输出 + LED 指示, 快速定位故障原因</li> <li>-速度信号输出 + LED 指示, 实时监测运行状态</li> <li>-8 位拨码开关设定默认运行方向</li> <li>-支持电机正反转快速换向运行</li> <li>-可拆式 8pin 电机接口</li> <li>-24V±10% 宽压输入</li> <li>-速度闭环控制, 额定负载内转速保持稳定</li> <li>-纯 I/O 通讯控制, 接线简单适配 PLC</li> <li>-兼容 50/60 系列电辊筒, 最大支持 100W 负载</li> <li>-塑料壳防护拨码开关与 LED 指示灯</li> </ul> | <ul style="list-style-type: none"> <li>-Bidirectional optocoupler isolation, automatically identifies PNP/NPN signals</li> <li>-16-speed DIP switch setting, supports 3-stage I/O multi-speed switching</li> <li>-4-stage acceleration/deceleration time configurable</li> <li>-8-fold comprehensive fault protection</li> <li>-Dual overheating and overcurrent protection for driver card and motorized roller</li> <li>-Red-green dual-color LED status lights, clearly indicating standby/operation/fault status</li> <li>-Fault signal output + LED indication for quick fault diagnosis</li> <li>-Speed signal output + LED indication for real-time operation monitoring</li> <li>-8-position DIP switch for setting default running direction</li> <li>-Supports quick forward/reverse direction change of the motor</li> <li>-Detachable 8-pin motor interface</li> <li>-24V±10% wide voltage input</li> <li>-Closed-loop speed control, maintaining stable speed within rated load</li> <li>-Pure I/O communication control, simple wiring and compatible with PLC</li> <li>-Compatible with 50/60 series motorized rollers, supports up to 100W load</li> <li>-Plastic housing protects DIP switches and LED indicators</li> </ul> |
|---|---|

#### 技术参数 Technical parameter

电压 Diameter	DC24V
额定电流 Wall thickness	2.5A(电辊筒功率≤60W) / 4.2A(电辊筒功率80~100W)
最高峰电流 Peak current	5A(电辊筒功率≤60W) / 9A(电辊筒功率80~100W)
运行响应时间 Run response time	≤5ms
<b>应用环境 Application environment</b>	
运行环境温度 Operating ambient temperature	-20~40°C
运行环境湿度 Operating ambient humidity	75% 以下(无结露)

## 尺寸 Size



## DIP拨动控制开关设置 DIP toggle control switch Settings



名称Name	描述 Description
SW1-4	16档调速组合, SW1最高位, SW4最低位 16 speed control combination, SW1 highest position, SW4 lowest position
SW5	默认运行方向切换 Default running direction switch.
SW6-7	加/减速时间拨码 Acceleration/Deceleration Time Dip Switch Settings Table
SW8	预留拨码, 此型号无此功能, 拨码设置无效 Reserved DIP switch settings; this model lacks this functionality, and DIP switch configurations are ineffective.

\*注意:除了配置开关中的默认方向外,所有开关动作会马上被执行,默认方向开关设置只在电动辊筒下一次启动运行才有效。

Note: All switching actions are performed immediately except for the default orientation in the configuration switch, which is only effective when the electric roller is next started.

## 通过RunA 和RunB进行信号动态调速 The signal dynamic speed regulation is carried out by RunA and RunB

Run A	Run B	描述
ON	OFF	100%的设定速度 100% set speed
ON	ON	75%的设定速度 75% of the set speed
OFF	ON	50%的设定速度 50% of the set speed
OFF	OFF	电动辊筒停止运行 Electric roller stops running

\*设定速度指的是通过DIP拨码开关设定的速度。

Set speed refers to the speed set by the DIP switch.

# FST-SQ-IO驱动器

## FST-SQ-IO Driver



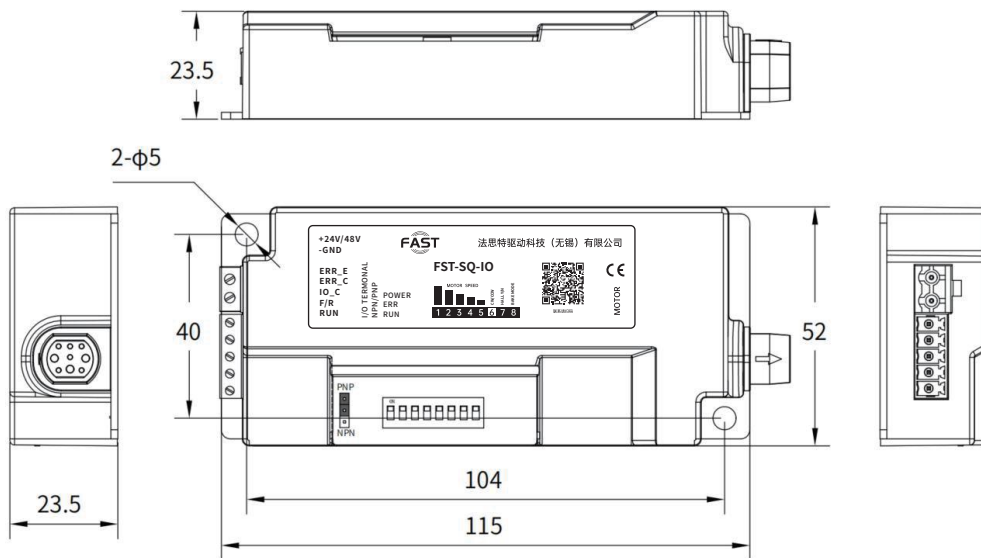
### 特性 Peculiarity

- |                            |  |
|----------------------------|--|
| -内部 20A 贴片式保险丝             | -Internal 20A patch fuse   |
| -驱动卡和电动辊筒的过热过流保护           | -Overheating and overcurrent protection for drive cards and electric rollers         |
| -电源极性接入错误的保护               | -Protection against incorrect polarity connection of power supply                    |
| -电源/电动辊筒电压过高指示 (60V)       | -High voltage indicator for power/electric roller (60V)                              |
| -电源电压过低指示 (18V)            | -Low power supply voltage indication (18V)   |
| -EBS刹车支持                   | -EBS brake support   |
| -自动错误恢复                    | -Automatic error recovery  |
| -3个状态 LED                  | -3 status LEDs   |
| -可拆卸式电源和信号接线端子             | -Detachable power and signal wiring terminals  |
| -电动辊筒运行时反转的能力              | -The ability of electric rollers to reverse during operationcard and electric roller |
| -错误输出信号和驱动卡与电动辊筒诊断的 LED 指示 | -Error output signal and LED indication for diagnosis of drive                       |
| -默认旋转方向的选择                 | -Default rotation direction selection  |
| -拨动开关与 LED 上的透明保护罩         | -Flip switch and transparent protective cover on LED                                 |
| -NPN和PNP 模式的切换             | -Switching between NPN and PNP modes   |
| -二段速可定制                    | -Two speed customizable  |
| -有感/无感运行                   | -Sensible/Non Sensible Operation   |

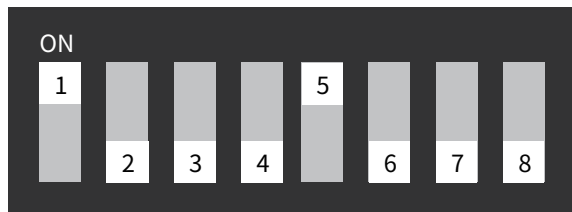
技术参数 Technical parameter	
电压 Diameter	DC24V
额定电流Wall thickness	2.5A(电辊筒功率≤60W) / 4.2A(电辊筒功率80~100W)
最高峰电流 Peak current	5A(电辊筒功率≤60W) / 9A(电辊筒功率80~100W)
运行响应时间 Run response time	≤5ms
应用环境 Application environment	
运行环境温度Operating ambient temperature	-20~40 C
运输存放环境温度Storage temperature	-30°C至+50°C, 空气湿度 5%至75%

# 驱动器 Driver

## 尺寸 Size



## DIP拨动控制开关设置 DIP toggle control switch Settings



名称Name	描述 Description
SW1-4	32档调速组合, SW1最高位, SW4最低位 32 speed control combination, SW1 highest position, SW4 lowest position
SW5	默认运行方向切换 Default running direction toggle
SW6-7	有感/无感切换, 默认霍尔模式拨码 OFF。 霍尔故障后可切换到 ON 临时应急使用。 Sensor/sensor-less mode toggle. Default Hall mode DIP switch set to OFF. Switched to ON for temporary emergency use following Hall sensor failure.
SW8	刹车模式, OFF 为电子刹车, ON 为伺服刹车 Brake mode: OFF indicates electronic braking, ON indicates servo braki

# FST-BH-150驱动器

## FST-BH-150 Driver



### 特性 Peculiarity

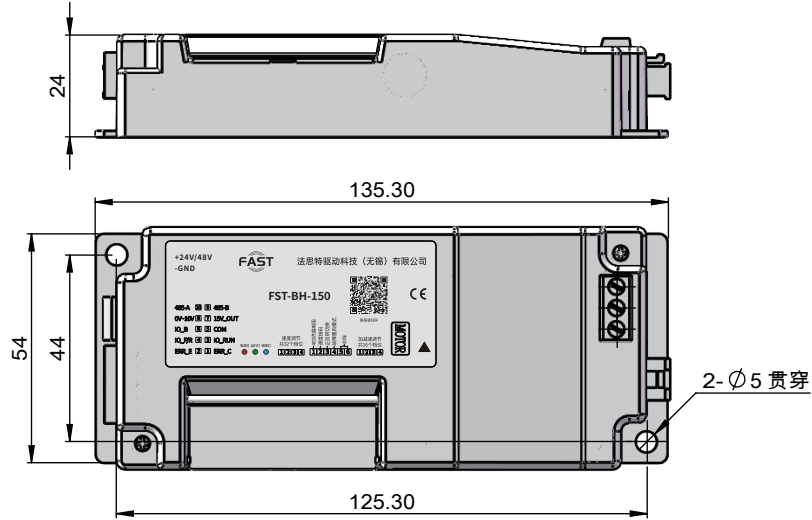
驱动卡和电动辊筒的过热、过流保护

- 内部10A贴片式保险丝
- 可拆卸式电源和信号接线端子
- 3个状态LED指示灯
- 错误/报警输出信号LED指示
- EBS/伺服刹车支持
- 支持485通讯功能
- 默认旋转方向的选择
- 重新给运行信号恢复
- 速度开环/闭环运行
- NPN和PNP模式外部切换
- PID和旋钮速度控制模式，
- 32种拨码速度选择
- 16档加/减速度调节
- 接0~10V外部电压无极调速
- 多段速可定制
- 电动辊筒运行支持正反转
- 电源极性接入错误保护
- 宽电压(24V/48V), 过高(60V)及
- 过低(18V)触发电压高低保护

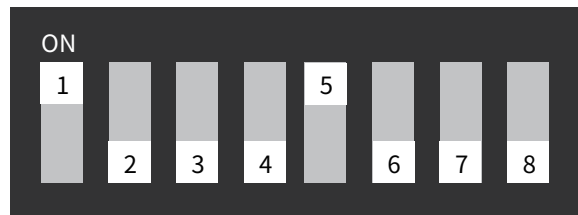
- Overheat and overcurrent protection for drive card and electric roller
- Internal 10A SMD fuse
- Removable power and signal terminals
- 3 status LED indicators
- Error/alarm output signal LED indication
- EBS/servo brake support
- Support 485 communication function
- Default rotation direction selection
- Resume operation signal
- Speed open-loop/closed-loop operation
- NPN and PNP mode external switching
- PID and knob speed control mode,
- 32 dial speed selections
- 16-speed acceleration/deceleration adjustment
- Connect 0 ~ 10V external voltage for stepless speed regulation
- Multi-speed customizable
- Electric roller operation supports forward and reverse rotation
- Power polarity access error protection
- Wide voltage (24V/48V), over-high (60V) and
- over-low (18V) trigger voltage high and low protection

技术参数 Technical parameter	
电压 Diameter	DC24V
额定电流 Wall thickness	3.3A
最高峰电流 Peak current	10A
运行响应时间 Run response time	<=5ms
应用环境 Application environment	
运行环境温度 Operating ambient temperature	0~40 C
运输存放环境温度 Storage temperature	-30°C至+50°C, 空气湿度 5%至85%

尺寸 Size



DIP拨动控制开关设置 DIP toggle control switch Settings

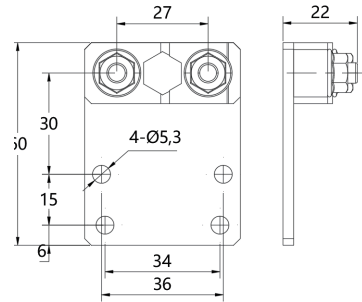
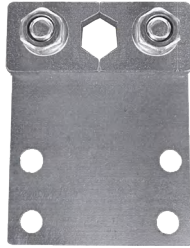


名称Name	描述 Description
SW1-4	16档调速组合, SW1最高位, SW4最低位 16 speed control combination, SW1 highest position, SW4 lowest position
SW5	默认电机方向位, 跟外部方向端口组合决定转向 Default motor orientation, combined with external direction port to determine steering
SW6-7	设定ACC/EDC加速度/减速度 Set ACC/EDC acceleration/deceleration
SW8	485通讯电阻接入控制, ON 接入, OFF不接入 485 Communication resistance access control, ON access, OFF access is disabled

电辊筒安装支架 drum motor mounting bracket

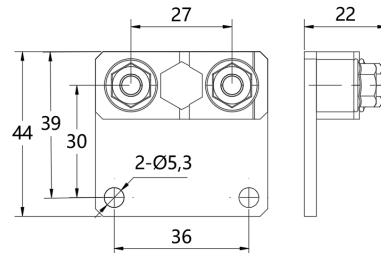
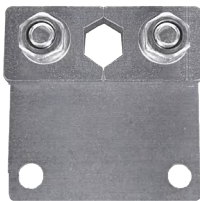
型号: FST-ZJ-W5060-L (FST-D50 系列& FST-D60)

材质:45#钢



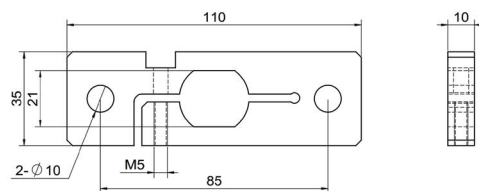
型号: FST-ZJ-W5060-M (FST-D50 系列& FST-D60)

材质:45#钢



型号: FST-ZJ-W76 (FST-D76 系列)

材质:45#钢



电辊筒锁胶套 Drum motor lock rubber sleeve

适用于直径50mm外管  
Suitable for 50mm diameter outer tube



型号: FST-SJT50-70-100



型号: FST-SJT50-70-120



型号: FST-SJT50-80-80

适用于直径60mm外管  
Suitable for 60mm diameter outer tube



型号: FST-SJT60-80-100

适用于直径76mm外管  
Suitable for 76mm diameter outer tube



型号: FST-SJT76-96-160



## 法思特驱动科技(无锡)有限公司

Fast Drive Technology (Wuxi) Co., LTD

Add: 江苏省无锡市滨湖区高运路117号

Tel: +86 15861693726 孔先生

E-mail: kongliang@wxfast.net

Web: www.wuxifast.com



扫码联系咨询  
Contact consultation